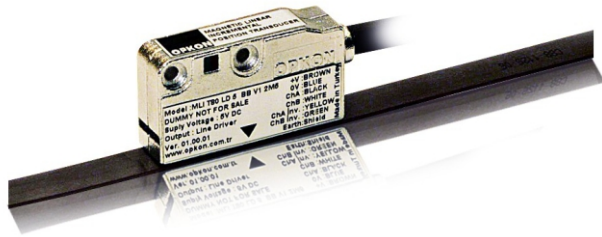


# Linear Magnetic Incremental Encoder

**MLI**



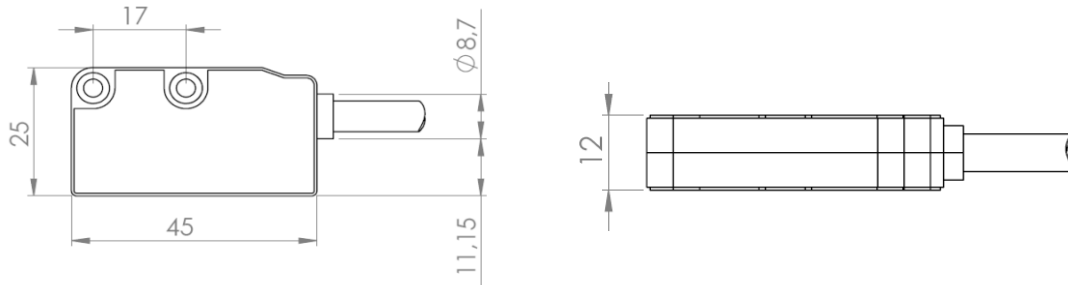
10, 20, 40, 50, 80,100 micron resolutions;  
 Magnetic contactless system;  
 Up to 20 meter measurement;  
 Totempole(Pushpull), TTL Linedriver or HTL Linedriver output options;  
 Up to 2 mm sensing distance;

## Main Applications

Marble / Stone Machineries, Wood Processing Machineries, Long Length Measurement and General Automation Applications

## Specifications

Type of measurement	Magnetic incremental contactless
Measurement strokes	20.000mm Max.
Resolution	0.02mm (20 micron), 0.05mm(50 micron), 0.08mm (80 micron), 0.1mm (100 micron)
Accuracy	± 0.04mm (±40 micron)
Output signals	A, B - AA', BB'
Output signal type	TTL, Totempole (Push-Pull), LD or HLD
Supply voltage	8-24 VDC (Standard), 5 VDC (Optional), or 5-30V DC (Optional)
Magnet width	10mm
Magnet thickness	1.5mm (Including steel base material + steel protector)
Sensing distance	For 2 mm magnet 1mm max. (for 5mm magnet max 2.5mm)
Case material	Anodized aluminium
Max. speed	3 m/s
Working temperature	-20 °C .... + 80 °C
Protection	IP 66
Electrical connection	2,5m Cable (Standard) (25m Cable max.) or Connector (Optional)



### Totempole cable configuration

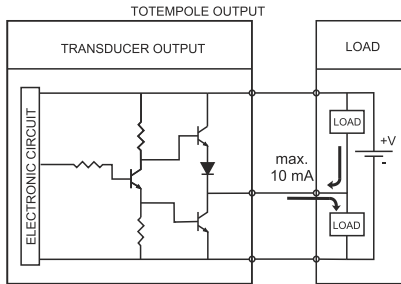
- Ch A : Black
- Ch B : White
- +V DC: Brown
- GND : Blue
- NC : Red
- Earth : Shield

### Linedriver cable configuration

- Ch A : Black
- Ch A' : Yellow
- Ch B : White
- Ch B' : Green
- +V DC : Brown
- GND : Blue
- Earth : Shield

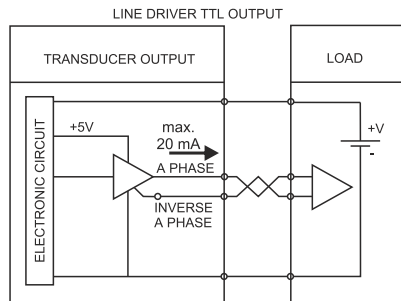
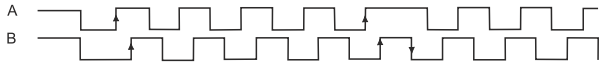
## Ordering Procedure

MLI	T80	TP	5	B	V2	2,5m
<i>Model</i>	<i>Resolution</i>	<i>Output type</i>	<i>Magnetic pole pitch</i>	<i>Output signal</i>	<i>Supply voltage</i>	<i>Connection</i>
	20 micron 40 micron 50 micron 80 micron 100 micron	TP = Totempole LD: Line Driver HLD: High Line Driver	2mm 5mm	B: A and B BB: AA', BB'	V1: 5V DC (for LD) V2: 8-24V DC (for TP) V3: 5-30V DC (for HLD)	2M5: 2,5m Standard or 9K: 0,5 meter cable with 9 pin connector



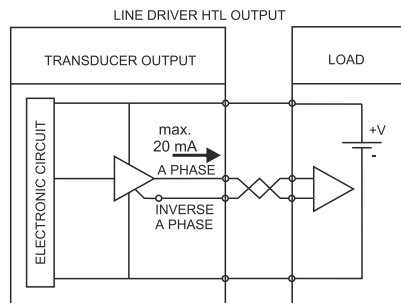
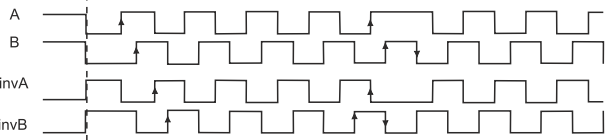
Supply Voltage : 8-24 VDC  
Output Current : max. 10 mA

Quad A/B Mode



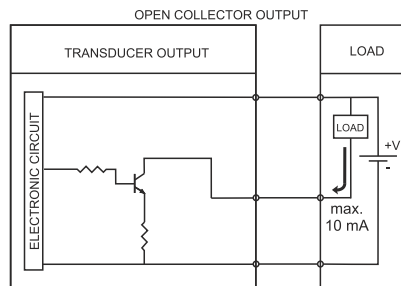
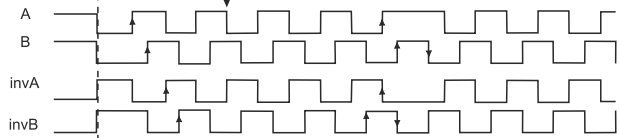
Supply Voltage : 5 VDC or 8-24 VDC  
Output Voltage : 5 VDC

Quad A/B Mode



Supply Voltage : 8-24 VDC  
Output Voltage : Supply Voltage

Quad A/B Mode



Supply Voltage : 8-24 VDC or 5 VDC  
Output Current : max. 10 mA

Quad A/B Mode

